



25/03/2019

Friends of Whitfield – Sponsorship and Support Program

Dear Whitfield State School Community and Partners,

Creating **modern, fit for purpose, play and learning environments for the children** of Whitfield State School to enjoy every day, is an important fundraising and strategic goal for our school and its P&C. Fantastic play areas are fundamental to helping children develop confidence, friendships and their creativity.

As a public school at the heart of this community, we also believe it is important to showcase the local businesses and community groups that grow and support our area. With this in mind we have developed our **“Friends of Whitfield” Sponsorship and Support Program**.

A strong, vibrant community and school are critical to each other and it is for this reason that we seek your support to raise much needed funds through either **sponsorship packages** or through **direct parent donations to our building fund**. With well over 800 students, their parents, families and extended families connected to our school and its events on a regular basis, if we work together we can achieve our fundraising and promotional aim.

Attached we provide for you a **Sponsorship and support package for our ‘Friends of Whitfield’ Program** including our **pledge form** (Please return form to school as soon as possible). We have also included some of the **design plans** that we have developed to improve the learning and play environment of our school for its children.

We thank you in advance for your interest and response and we look forward to continuing to work with you to provide the best possible school for our children over this year and beyond.

Yours sincerely

Mr MATT THOMPSON
Principal

Ms Julia Marshall
P&C President

Sponsorship Tier	Whitfield State School – P&C Sponsorship and Support Package Details
<p>DIAMOND Over \$2500</p>	<p>EVENT Sponsor</p> <ul style="list-style-type: none"> • Acknowledgement as Tier 1- (Diamond) Event Sponsor for a school event - marketing and media e.g. PACE day, Sports Day, Annual Awards, School Musical etc. <ul style="list-style-type: none"> - Acknowledgement as primary sponsor in all pre and post event marketing and media - Exclusive display of corporate banner adjacent to school banner at entry/ main reception area of specific school event - Corporate Banner next to speaker's podium at event - Opportunity for representative to give short address and/or present awards during official program - Option of naming rights for event-specific awards, activity or team where appropriate - Opportunity to collect volunteered personal information from school guests i.e. not students - Logo placed on front page of official program - Acknowledgement by Principal during official program and other communication related to event - Opportunity for product display and/or distribution of branded promotional materials <p>As well as for 12 Months</p> <ul style="list-style-type: none"> • Corporate signage to be affixed to school fence (maximum size – 2300mm wide x 1000mm high) • Logo and link placed on Whitfield SS website • Logo display in school reception "Friends of Whitfield" • Free advertising in the Whitfield State School Newsletter • Official "Friends of Whitfield State School – Diamond Sponsor" Certificate for display • Included in tender offer where possible for school purchases (Please be aware that value for money principles are required to be used to make final purchase decisions) • Receipt for tax purposes provided
<p>PLATINUM Over \$1000</p>	<p>EVENT Sponsor</p> <ul style="list-style-type: none"> • Acknowledgement as Tier 2 – (Platinum) Event Sponsor for a school event - marketing and media e.g. PACE day, Sports Day, Annual Awards, School Musical etc. <ul style="list-style-type: none"> - Option of naming rights for event-specific award or activity or team where appropriate - Display of corporate banner at entry/ main reception area of specific school event - Acknowledgement by Principal during official program and any other communication related to the event - Opportunity for product display and/or distribution of branded promotional materials - Logo placed in official program - In-kind support accepted <p>As well as for 12 Months</p> <ul style="list-style-type: none"> • Logo and link placed on Whitfield SS website • Logo display in school reception "Friends of Whitfield" • Free advertising in the Whitfield State School Newsletter • Official "Friends of Whitfield State School – Platinum Sponsor" Certificate for display • Included in tender offer where possible for school purchases (Please be aware that value for money principles are required to be used to make final purchase decisions) • Receipt for tax purposes provided (not for in-kind)
<p>GOLD Over \$500</p>	<p>EVENT Sponsor</p> <ul style="list-style-type: none"> • Acknowledgement as Tier 3 – (Gold) Event Sponsor for a school event - marketing and media e.g. PACE day, Sports Day, Annual Awards, School Musical etc. <ul style="list-style-type: none"> - Opportunity for product display and/or distribution of branded promotional materials - Logo placed in official program - In-kind support accepted <p>As well as for 12 Months</p> <ul style="list-style-type: none"> • Logo and link placed on Whitfield SS website • Logo display in school reception "Friends of Whitfield" • Free advertising in the Whitfield State School Newsletter • Official "Friends of Whitfield State School – Gold Sponsor" Certificate for display • Included in tender offer where possible for school purchases (Please be aware that value for money principles are required to be used to make final purchase decisions) • Receipt for tax purposes provided (not for in-kind)
<p>SUPPORTER Over \$50</p>	<ul style="list-style-type: none"> • A letter of thanks from the school • A Whitfield Supporter Keyring • Recognition in School Newsletter and Facebook • A tax deductible receipt will be provided from the P&C's Building fund.

- ❖ All signage, banners etc. are to be supplied by the sponsor and approved by the Principal or their delegate.
- ❖ All sponsorships are subject to agreement with the Principal.





Friends of Whitfield – Pledge Form 2019

Business Name (if Applicable) _____

Individual or Contact Name _____

Postal Address _____

Email Address _____ **Contact Number** _____

Sponsorship Packages

- Diamond Tier - \$2500.00 incl GST
- Platinum Tier - \$1000.00 incl GST
- Gold Tier - \$500.00 incl GST

- A representative of the school will contact sponsors to discuss their package
- Sponsors will be directly invoiced by the school

Event Sponsor - Expression of Interest – Please number for preference

	Whitfield Sports Day (Athletics)		Annual Awards Presentation
	Early Learning Fun Day (Under 8s Day)		Big Healthy Breakfast
	PACE Day		Whitfield's Talent Quest
	School Musical		Education Week
	Biennial Musical Marvels / Art Show		NAIDOC Week/ Day
	Children's Book week		Science on the Oval

Supporter Donations

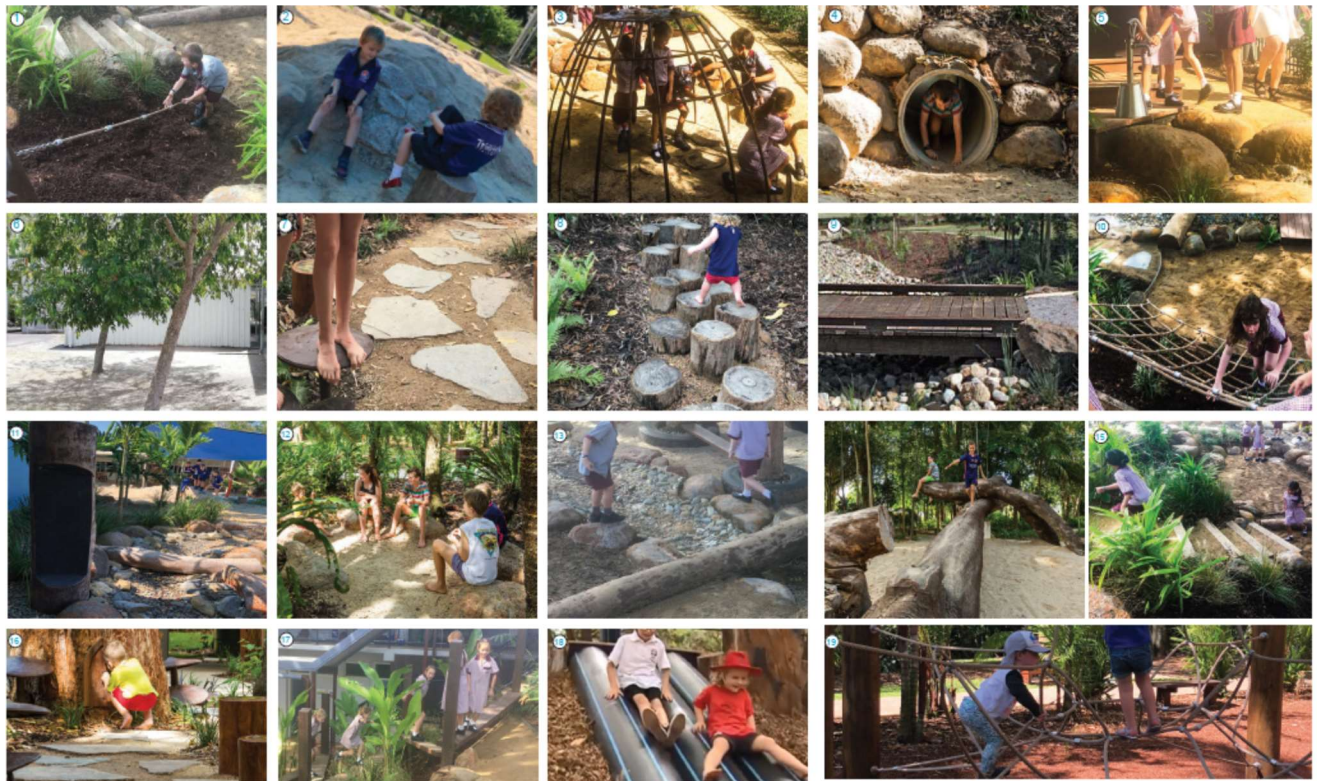
- I wish to donate \$50 to the school's Building Fund to support upgrades to school facilities.
- I wish to donate \$ _____ to the school's Building Fund to support upgrades to school facilities.

Donations can be made to Whitfield State School P&C Building Fund via Flexischools or in person at the school office by cash.

Signature

Date

Early Year's Nature Play Area Upgrade - Concept



Upper Years Play Area Upgrade - Concept



IEC Play Area Upgrade - Concept



* Please note – only fixtures that are part of permanent structures such as covered outdoor learning areas are eligible for funding under our building fund.